

## Symphony No. 94 in G Major ("Surprise")

## II

Andante ♩ = 63 - 66

Franz Joseph Haydn

*semplice* *ten.* *V V* *ten.* *V V* *ten.* *V V*

9 *p* *ten.* *V V* *ten.* *V V* *ten.* *V V* *ff* *p*

18 *0* *V V* *ten.* *V V* *V V V //*

49 **Minore** *ten.* *V V* *ten.* *3 V* *V V* *V*

57 *f* *p* *4*

61 *f* *V* *V*

64 *2* *3* *E* *1*

67

70 *2* *3* *107* **Maggiore** *V* *6* *6*

*p* *ff*

108 *1* *0* *1* *0* *2* *1*

111 *V* *4* *1* *0* *2*

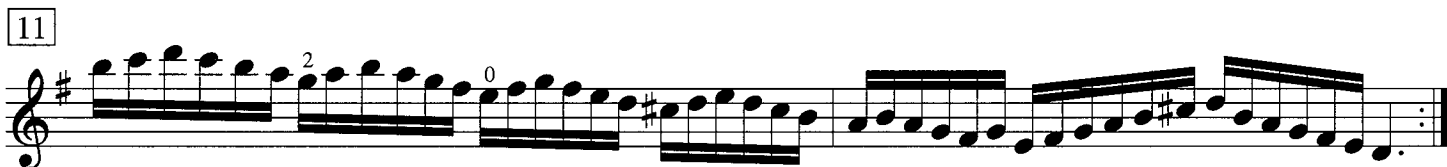
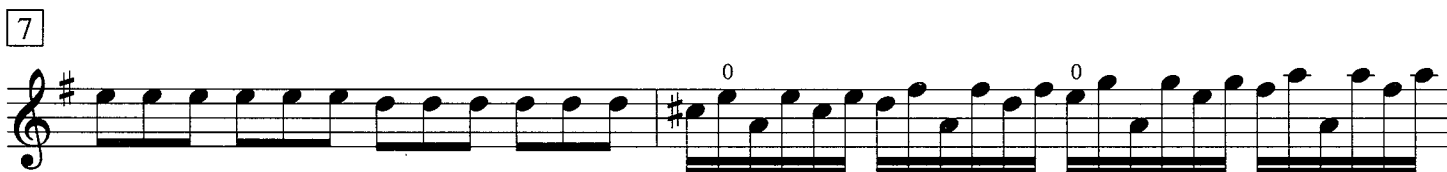
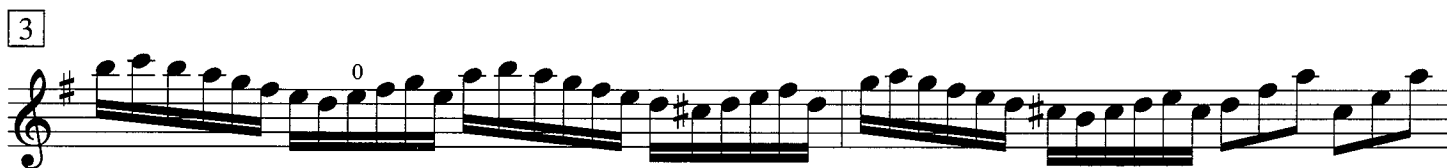
Composed in 1791

## Brandenburg Concerto No. 3 in G Major, BWV 1048

## III

Johann Sebastian Bach

Allegro ♩. = 72 - 76



The image displays two staves of musical notation for the second movement of Johannes Brahms' Symphony No. 3. The top staff begins with a treble clef, a key signature of two flats (B-flat and E-flat), and a 7/4 time signature. It features a series of chords with a 'div.' (divisi) marking and a boxed letter 'H'. The dynamic marking is *mp espress.*. The bottom staff continues the piece, starting with a treble clef, the same key signature, and a 3/4 time signature. It includes a boxed letter 'I', a *p* dynamic marking, and a *dolce* instruction. A large bracket spans across both staves, indicating a specific section. The bottom staff concludes with a *div.* marking and an *mf* dynamic.

J. Brahms: Symphony no. 3, II